

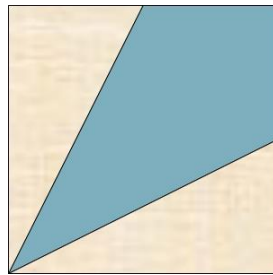


The Spice Route Quilt

Part 6

Kite (Variation) Block (FPP)

(12) 6½" x 6½"

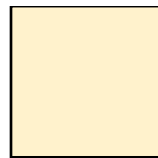


MAKE (12) 6½" x 6½" KITE (VARIATION) BLOCKS

Fabric requirements and cutting chart:



Medium
(2) 5" WOF
or (1½) 7" WOF



Light
(1½) 4" WOF
or (12) 8" x 4"

To achieve a more polished result, I prefer using FPP when making most blocks with odd shapes. The lines are more accurate and the angles sharper, which is always welcome when it comes to the final piecing of the blocks. It's a simple technique with wonderful rewards.

Just a word of caution, removing the tiny paper pieces afterwards can be quite a tedious process. Fortunately, for this project, the units are big and few, so use this as an opportunity to practice FPP for projects to follow.

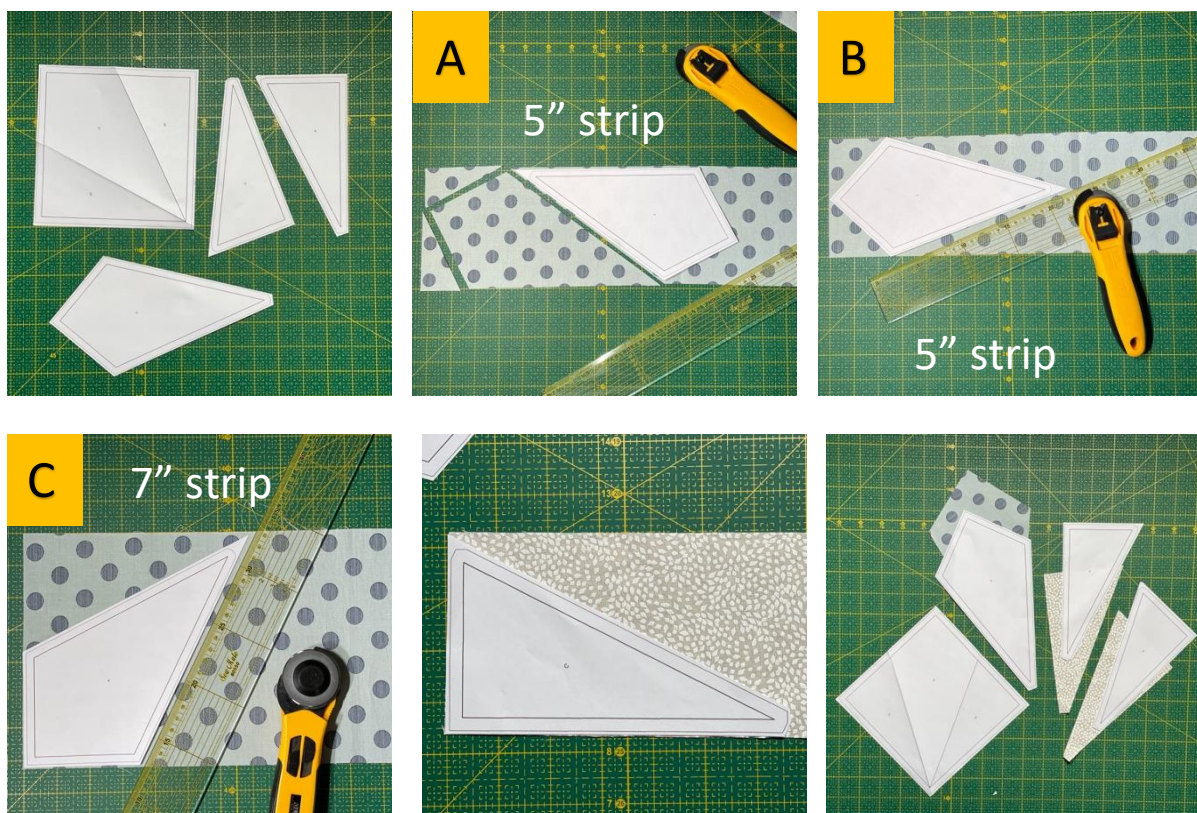
A few basic tips:

- Shorten the sewing machine stitch length to about 1.5 when sewing FPP. The shorter stitch length will allow for easy removal of the paper, without distorting the stitches.
 - Use a standard presser foot without a guide.
 - Use a sharp new needle at the beginning of each FPP project.
 - Always follow the numbering on the paper pieces as the order for stitching the seams.
 - Stitch on the dotted lines.
1. Print (12) copies of the FPP pattern (A). Make sure the printer setting is on "Actual Size" or "Scale: 100%". After printing, check the 1" square on the templates to make sure your pattern size is correct.

If the test square does not measure 1"x1". Use the "Custom Scale" in the Print window. Increase the percentage if the square is too small, decrease the percentage if the square is too large. You will need to reprint and remeasure the square to make sure the final size correct.

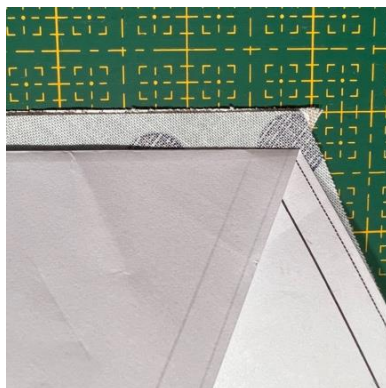
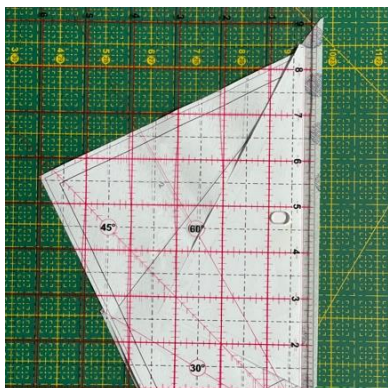
2. Cut out the FPP pattern about $\frac{1}{4}$ " from the final cutting line (dotted line). Fold along each sewing line. This provides a visual guide for fabric placement, and this also helps when trimming the fabric.
3. You can use the provided templates for cutting the fabric. I suggest you cut about $\frac{1}{4}$ wider than the outer margin of the template, to allow for easy fabric placement without excess fabric wastage.
4. Cutting instructions: Position the kite shape template on the 5" strip of medium fabric as shown in **photo A**. Alternatively, you can just use the 5" strip as shown in the **photo B**. You may notice that the corner is not on the straight of grain. For FPP (as you use the paper as a stabilizer) it is not always possible to have the straight of grain on the corners or along the edges. If you particularly want the corner to be on the straight of grain, you will need to cut a 7" strip and position the template as shown in **photo C**.

If you choose to use the 8" x 4" Light Fabric rectangles to cut the triangles, cut (6) rectangles on the diagonal from the top left to the right bottom corner and the other (6) from the top right to the bottom left corner.

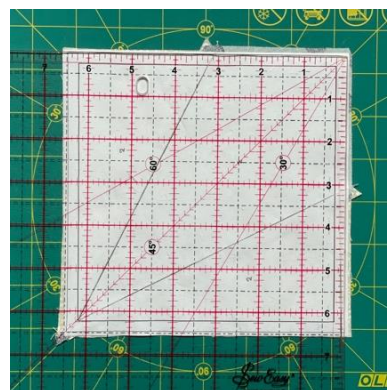
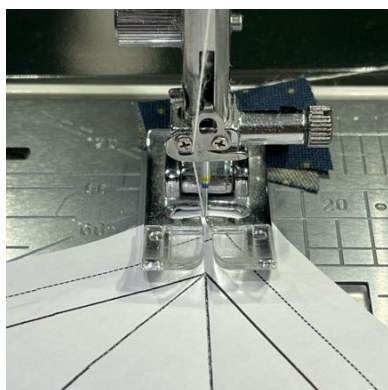


5. With the FPP wrong side up, pin the Medium Fabric right side up to the pattern A1. I make use of the light on my sewing machine to see the lines on the reverse of the pattern. Make sure the pin is not on the sewing line. I recommend doing this for all 12 blocks. This way you can chain-trim and chain-stitch to speed up the process.

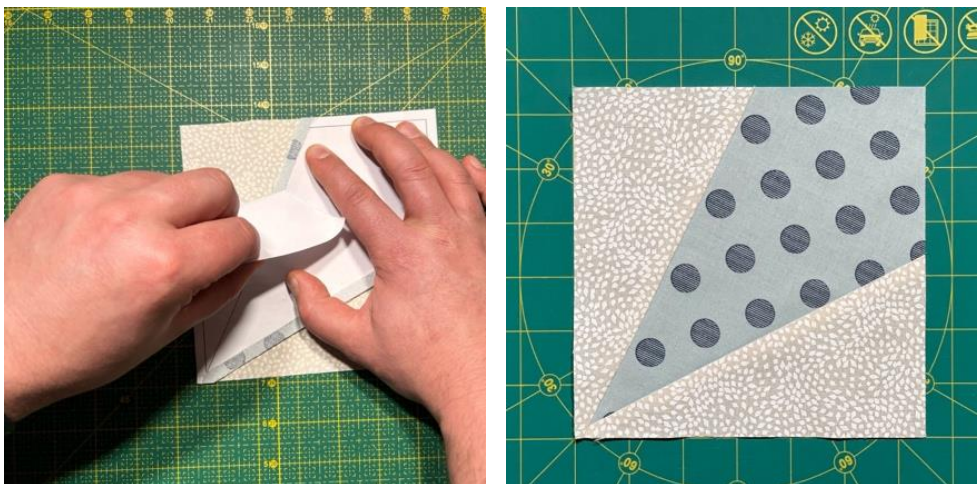
6. Fold back the paper and trim the first seam allowance (between A1 and A2) $\frac{1}{4}$ " from the folded edge.
7. Fold back the paper and align the edge of the Light Fabric A2 to A1, right sides together. Pin fabric a good distance from the sewing line.



8. TIP: Since FPP doesn't always allow for pressing your seams to the darker fabric, always align the lightest fabric a thread's width beyond the darker fabric, and the darker fabric a thread's width inside the lighter fabric. This way there won't be any dark seams shadowing to the front.
9. Start sewing outside the seam allowance of the pattern.
10. Press your seams and repeat the process for the other side A3.



11. Once all your units are completed, trim along the outside cutting lines.
12. Be careful and gentle when removing the paper. Support the stitch line and always try to pull the paper towards the edge of the block, rather than from the edge of the block.



Happy Stitching!

Please share your progress pics on the sew-cial networks tag @ghqg_south_africa and @compiond
Post with the hashtags #GHQGMysteryQuilt #thespiceroutequilt #thespicerouterecipes
on Instagram and Facebook

You are welcome to contact me if you have any questions: dlcompion@gmail.com